

# COLONIAL PARK ADDITION TO COLONIAL PARK SECTION OF ST. LUCIE ESTATES STUART

MARTIN CO. FLORIDA  
BEING THE N 1/2 OF S.W. 1/4 OF N.W. 1/4 SEC. 10-T. 38 S-R. 1 E.

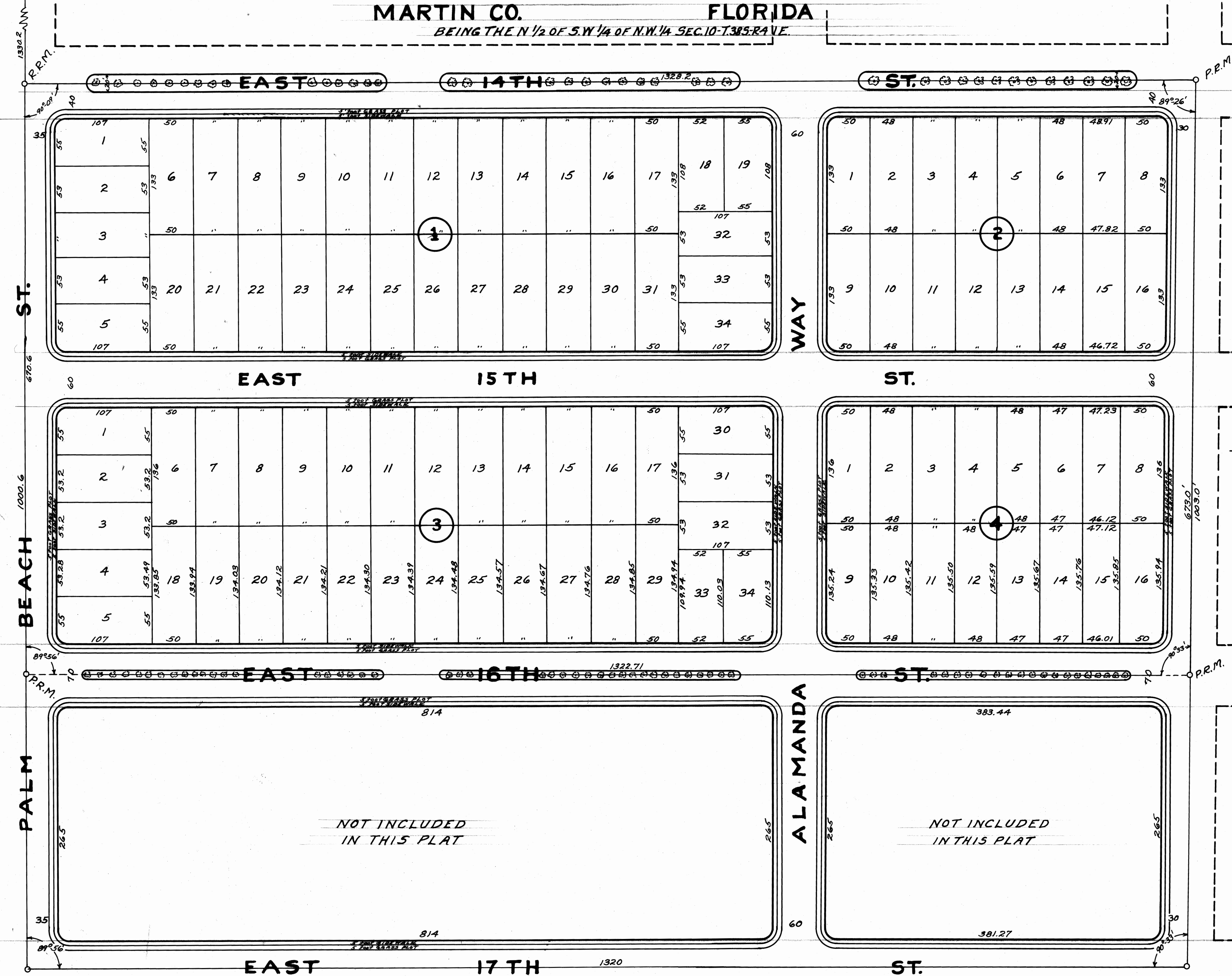
This is a true Copy of the Original Plat of Record of Colonial Park Section of St. Lucie Estates Plat Book 1, Page 37, Martin County, Florida.

*And A. Moffatt*  
Registered Land Surveyor  
Florida Certificate No. 443

State of Florida }  
County of Martin }  
This Instrument was filed for Record at 11<sup>00</sup> AM This 12<sup>th</sup> day of Aug. 1926 and duly recorded on the 12<sup>th</sup> day of Aug. 1926 in Book 1 of Plats on Page 57. Record Verified.

*J. R. Conway*  
CLERK CIRCUIT COURT  
BY: *Amburn*  
DEPUTY CLERK

Sec. 4  
3  
9  
10



### DEDICATION

STATE OF FLORIDA } s.s.  
COUNTY OF MARTIN }

KNOW ALL MEN BY THESE PRESENTS: That the St. Lucie Realty Co. a Corporation organized and existing under the laws of the State of Florida, the owners in fee simple of the tract of land shown on the attached plat as Colonial Park in the town of Stuart, Florida and more particularly described as follows:

Beginning of a permanent reference monument on the west line of sec. 10 said point being 1330.2 feet south measured along the west line of sec. 10 from the corner of sec. 9 and sec. 10 Twp. 38 S. R. 1 E.; thence deflecting 90° 09' to the left and east a distance of 1328.2 feet to a P.R.M.; thence deflecting 30° 34' to the right and south a distance of 673 feet to a P.R.M.; thence deflecting 89° 27' to the left and west 1322.71 to a P.R.M. on the west line of said sec. 10 thence deflecting 70° 22' to the right and north along the west line of said sec. 10 670.6 feet to a P.R.M. the point of beginning. Being the N. 1/2 of the S.W. 1/4 of N.W. 1/4 of sec. 10 Twp. 38 S. Range 1 E. and containing 20 acres more or less.

Have caused the same to be surveyed and platted as shown on the attached plat and do hereby dedicate to the perpetual use of the public as public highways the streets as shown on the attached plat reserving, however, unto itself, its successors assigns or legal representatives, the reversion or reversions of same whenever abandoned by the public or discontinued by law.

IN WITNESS WHEREOF, it has caused these presents to be signed by its President and attested by its secretary, this 9<sup>th</sup> day of December, A.D. 1925.

*Sanford P. Miller* President  
*Walton B. Miller* Secretary  
*Charles F. Jones*  
*Wm. J. Hall*  
*Robert B. Griffin*

### ACKNOWLEDGEMENT

STATE OF FLORIDA } s.s.  
COUNTY OF MARTIN }

I, the undersigned, an officer duly authorized to administer oaths and take acknowledgements do hereby certify that on this day personally appeared before me Sanford P. Miller and Walton B. Miller, Pres. and Sec. respectively of the St. Lucie Realty Co. a Florida corporation to me well known to be the persons described and who executed the foregoing instrument, and acknowledged to and before me that they executed the same for the uses and purposes therein expressed. WITNESS, my hand and official seal this 10<sup>th</sup> day of Dec. A.D. 1925.

My Commission expires Feb. 20, 1927  
*John P. O'Connell*  
Notary Public

### ENGINEERS CERTIFICATE

STATE OF FLORIDA } s.s.  
COUNTY OF MARTIN }

KNOW ALL MEN BY THESE PRESENTS, that the Roat Concern Inc. a corporation created and existing under the laws of the State of Florida have surveyed and platted the tract of land, the plat of which is shown hereon and which is dedicated above and the measurements and angles are correct to the best of their knowledge and belief and permanent reference monuments have been placed as required by law. IN WITNESS WHEREOF, the said corporation has caused THESE PRESENTS to be executed by its President under its corporate seal this 16<sup>th</sup> day of December A.D. 1925.

Attested by *R. S. Roat* sec. THE ROAT CONCERN INC.  
by *W. M. Roat* Pres.

Sworn and subscribed before me this 23<sup>rd</sup> day of December, A.D. 1925.  
My Commission expires May 23, 1927  
*W. H. Crowell*  
Notary Public

STATE OF FLORIDA } s.s.  
COUNTY OF MARTIN }

STUART FLORIDA December 23<sup>rd</sup> A.D. 1925  
This map checked with the present streets and the City requirements and is hereby recommended to the Board of Commissioners, City of Stuart this 23<sup>rd</sup> day of Dec. A.D. 1925 for their approval.  
*R. F. Conway* City Engineer  
Approved by the Board of Commissioners, City of Stuart this 23<sup>rd</sup> day of Dec. A.D. 1925  
*J. E. Taylor* Chairman  
*Attest: W. W. K. Spens* City Clerk

THE ROAT CONCERN, INC.  
ENGINEERS SURVEYORS  
STUART FLORIDA  
SCALE 1"=60'  
Nov. 25, 1925  
By *W. M. Roat* President

Approved by the Planning Board City of Stuart, Fla.  
21<sup>st</sup> This 21<sup>st</sup> day of December A.D. 1925.  
*W. H. Crawford* Chairman  
*Ed. B. Carter* Secretary

APPROVED THIS 16<sup>th</sup> day of Dec. A.D. 1925  
*W. M. Roat*  
COUNTY SURVEYOR